

PART OF THE N.W. 1/4 OF N.E. 1/4 OF SEC. 8, T.5N., R.1W., S.L.B. & M.

AMENDED PLAT OF  
GRENWOD VILLAGE

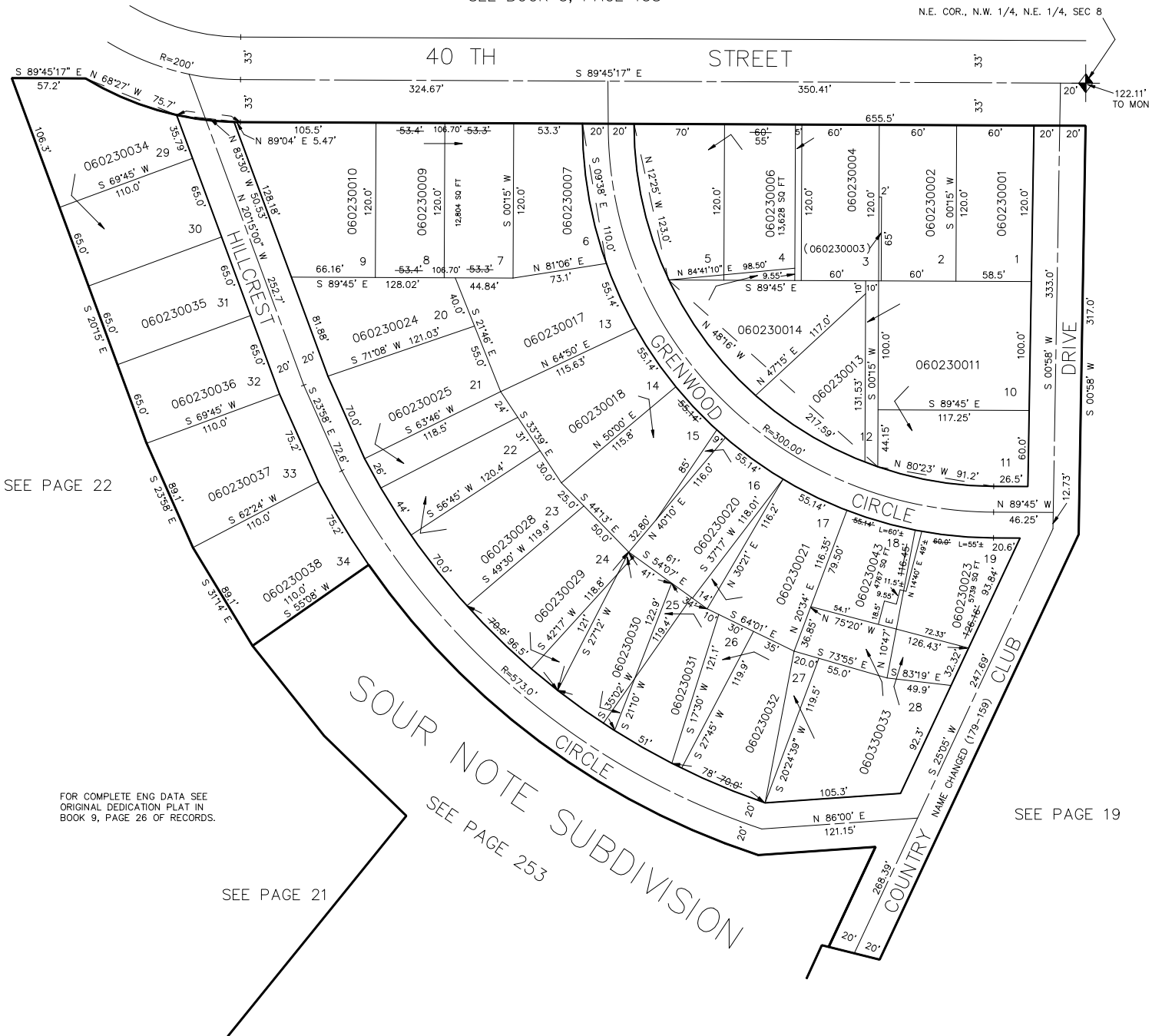
TAXING UNIT: 27

IN SOUTH OGDEN CITY

SCALE 1" = 60'

SEE BOOK 5, PAGE 138

N.E. COR., N.W. 1/4, N.E. 1/4, SEC. 8



SEE PAGE 22

FOR COMPLETE ENG DATA SEE  
ORIGINAL DEDICATION PLAT IN  
BOOK 9, PAGE 26 OF RECORDS.

SEE PAGE 21

SEE PAGE 253

SEE PAGE 19